



PROPRIETARY ITEM - EXCEPT FOR USES EXPRESSLY GRANTED IN WRITING INFORMATION DISCLOSED HEREON IS CONFIDENTIAL AND ALL RIGHTS PATENT AND OTHERWISE ARE RESERVED BY SOUTHCO, INC.

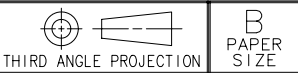
CAM LOCK, WING STYLE

DATE	DRAWN	CHKD	SCALE	DRAWING NUMBER
07APR2003	DLH	BS	1:1	J-CM-1

REV	DATE	DRAWN/CHKD	DESCRIPTION
A	27JUN2003	DLH/AJH	PRN: P2003-0538
B	19JUL2003	RLR/MJS	PRN: P2003-0614
C	20AUG2003	AJH/MJS	PRN: P2003-0714
D	16JUN2006	LCR/MDY	PRN: P2006-0051

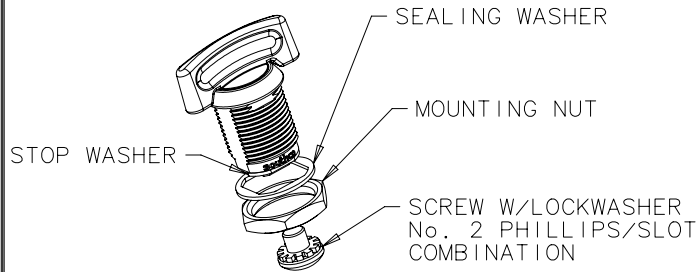
INCHES

ALL DIMENSIONS WITHOUT TOLERANCES ARE FOR REFERENCE ONLY.



NOTES:

- A. FOR INSTALLATION AND PANEL PREPARATION SEE DRAWING J-CM-1-A.
- B. SEE J-CM-C FOR CAM PART NUMBERS.



SUBASSEMBLY ONLY  
(CAM ORDERED SEPARATELY)  
PART No. CM-1-2B101-1B SHOWN

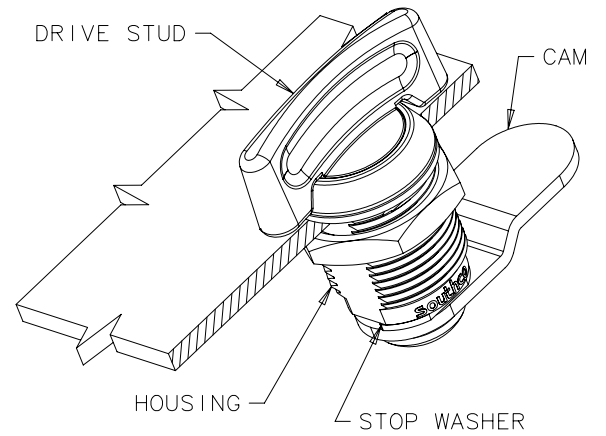
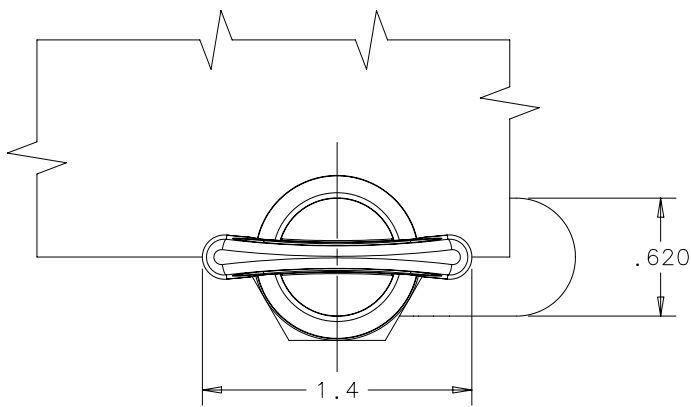
PART NUMBER: CM-1- [ ] 1 [ ] -1 [ ]

HOUSING LENGTHS:  
1 = .625  
2 = .875  
3 = 1.375

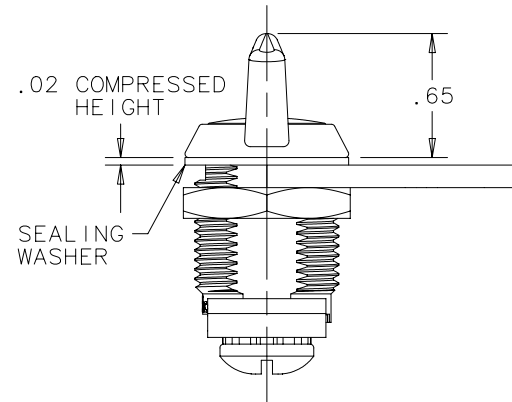
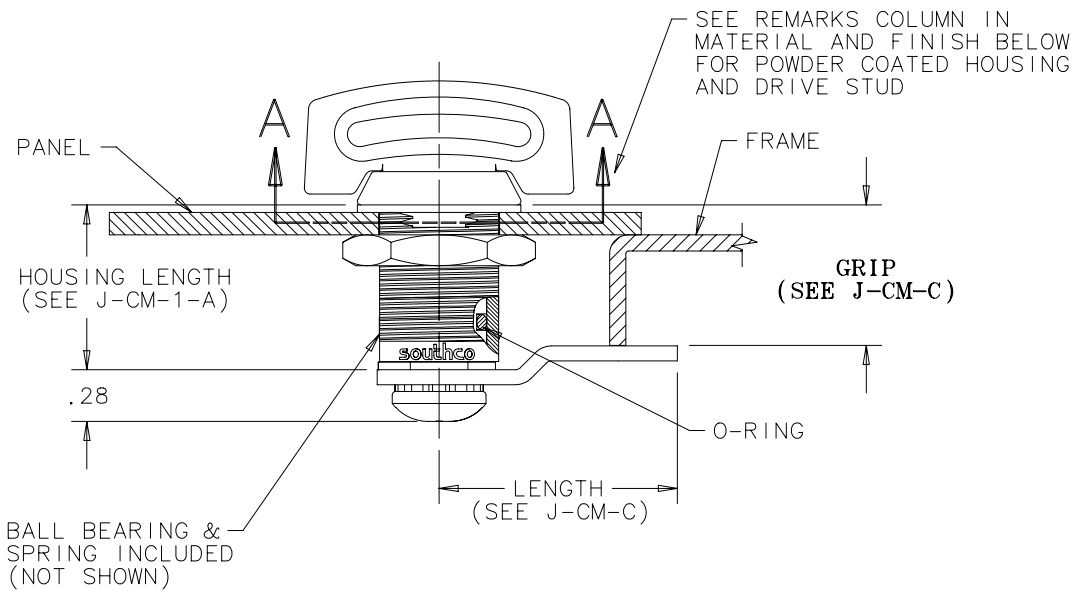
HOUSING FINISH:  
B = BLACK POWDER COATED  
C = CHROME PLATED

WING DRIVER FINISH:  
B = BLACK POWDER COATED  
C = CHROME PLATED

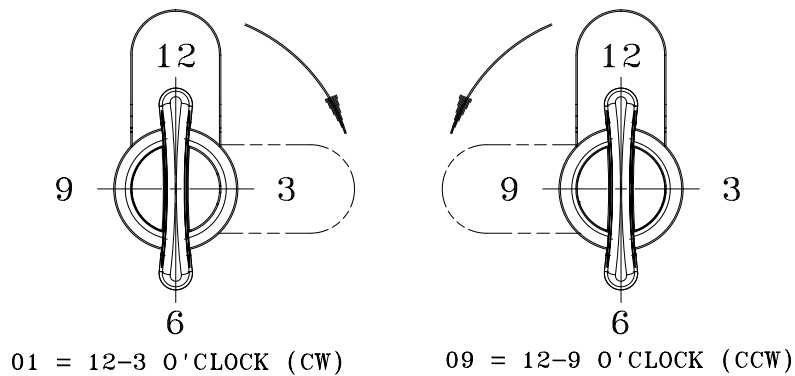
CAM ROTATION ANGLE:  
01 = 12 - 3 O'CLOCK (CW)  
09 = 12 - 9 O'CLOCK (CCW)



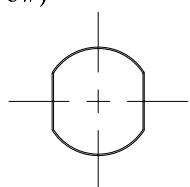
PART NUMBER CM-1-2B101-1B SHOWN  
ASSEMBLED WITH CAM CM-C210  
(CAM ORDERED SEPARATELY)



CAM ROTATION ANGLE



PANEL PREPARATION ORIENTATION



MATERIAL AND FINISH

COMPONENT	MATERIAL DESCRIPTION	FINISH DESCRIPTION	REMARKS
DRIVE STUD	DIE CAST ZINC	CHROME PLATED	VISIBLE PORTION OF DRIVE STUD IN ASSEMBLY IS POWDER COATED
		TRIVALENT CHROMATE CONV. COATED & POWDER COATED	
HOUSING	DIE CAST ZINC	CHROME PLATED	HEAD IS POWDER COATED ABOVE SECTION A-A
		TRIVALENT CHROMATE CONV. COATED & POWDER COATED	
CAM	STEEL	ZINC PLATE, BRIGHT CHROMATE CONV. COATING	
O-RING	NITRILE	BLACK	
SEALING WASHER	NATURAL RUBBER(80°)	BLACK	
STOP WASHER	STEEL	ZINC PLATE, BRIGHT CHROMATE CONV. COATING	
SCREW WITH LOCKWASHER	STEEL	ZINC PLATE, BRIGHT CHROMATE CONV. COATING	
MOUNTING NUT	DIE CAST ZINC	TRIVALENT CHROMATE CONV. COATING	
BALL BEARING	STEEL		APPLIED W/GREASE
SPRING	STEEL		APPLIED W/GREASE